

## Product introduction

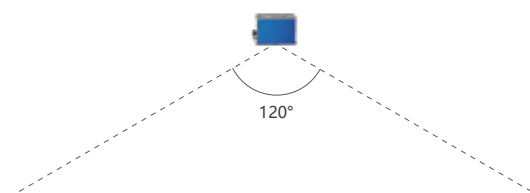
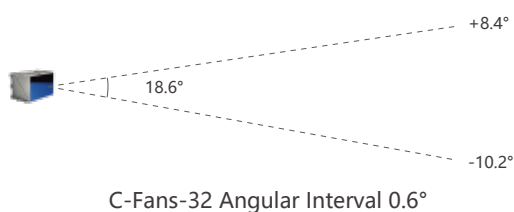
C-Fans-32 navigation LiDAR is a solid-state laser scanner. It is designed as an automotive grade sensor suitable for mass-production vehicles. C-Fans-32 weighs 572 g only with power consumption as low as 6 W.

C-Fans-32 has an excellent 3D environment detecting capability. Its maximum range is up to 210 m with a FOV of  $120^\circ$  (H)  $\times$   $18.6^\circ$  (V). Its vertical angular resolution is  $0.6^\circ$ .

Stability and endurance of C-Fans-32 is proven with series of environment tests including vibration, temperature, aging, electrical and electromagnetic compatibility. It is certified as class 1 laser product and radiation safe by FDA of USA. C-Fans-32 has been widely applied for autonomous driving and HD mapping.



## Angle distribution

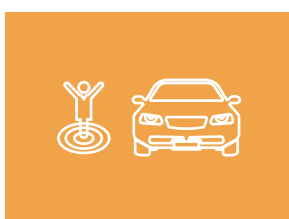


## Product features



### Long range

Maximum range >210 m



### High precision

Range accuracy <2 cm



### Ultralow-power

Power Consumption <6 W



### Light weight

572 g

### Easy integration



C-Fans-32 navigation LiDAR is of compact size, simple structure and is easy to install. It can be easily integrated with vehicles, drones, and other platforms.

### High stability

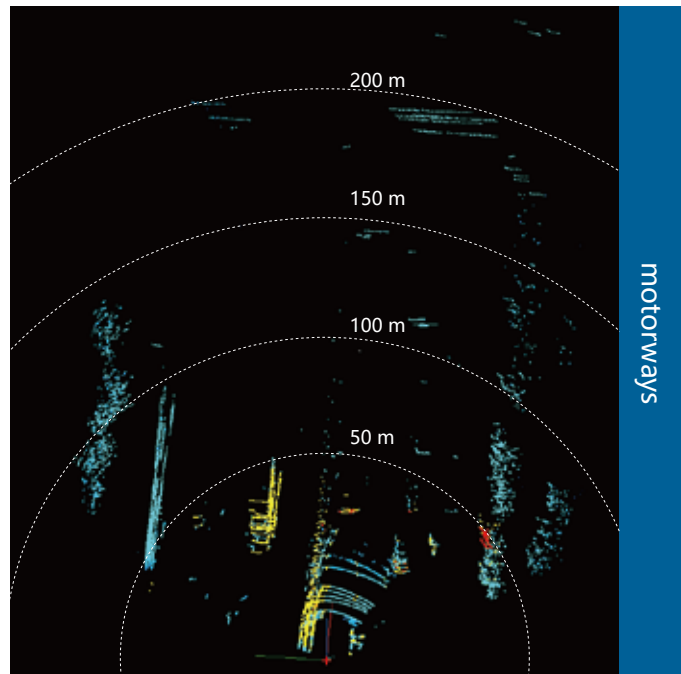


C-Fans-32 navigation LiDAR runs normally after a continuous 1000-hour operation.

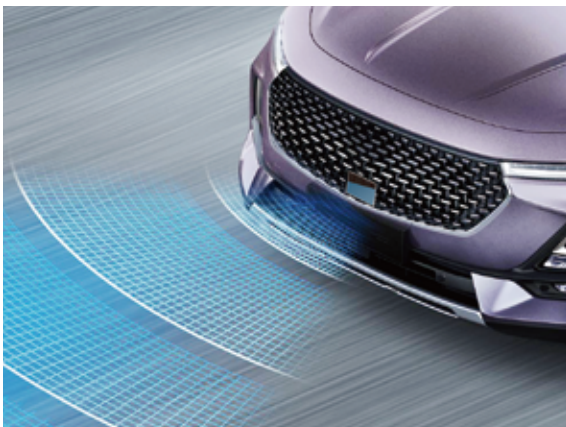
C-Fans-32 navigation LiDAR undergoes successful tests for vibration, temperature endurance, aging, electrical and electromagnetic compatibility.

## Product specifications

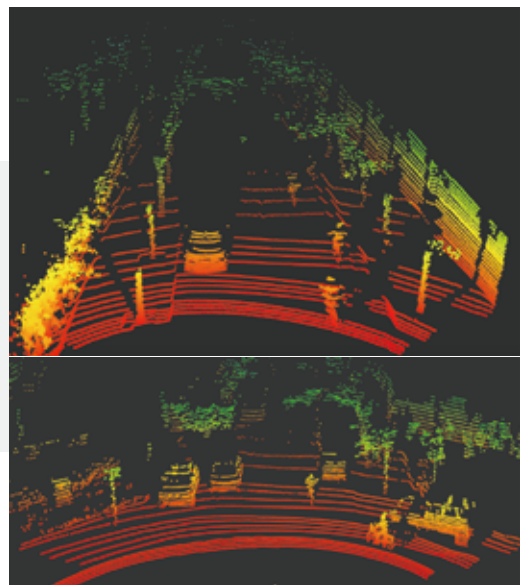
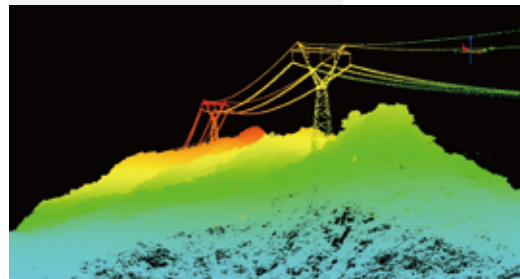
Wavelength	905 nm
Laser class	Class 1
Pulse frequency	265 kHz
Echo mode	2 echoes
Intensity	8 bit/12 bit
Vertical FOV	18.6° ( 8.4° ~ -10.2° )
Vertical resolution	Average 0.6°
Horizontal FOV	≥ 120°
Angular resolution	0.1° ~ 0.4° ( 20 ~ 80Hz )
Max. range	200 m
Accuracy	2 cm
Scan rate	20-80 Hz
Interface	Ethernet, PPS
Weight	572 g
Power supply	9 ~ 32 VDC
Operating temperature	-40°C ~ +85°C
Power consumption	≤ 6 W
Size (mm)	105 X 70 X 71



### Autonomous driving



### Mapping with drones



Point cloud data

### Applications

C-Fans-32 navigation LiDAR can precisely detect vehicles, pedestrians and other things in the scene.



SureStar Headquarter	SureStar Suzhou	SureStar Hefei
5 <sup>th</sup> Floor, building 1, No.5 YongFeng Road, Haidian District, Beijing, China Tel : +86 10-58717175 Email : bkth@isurestar.com Website : www.isurestar.com	6 <sup>th</sup> Floor, Building B1, Dongfang Chuangzhi Garden, No. 18, Jinfang Road, Suzhou Industrial Park, China Tel : +86 512-62886015	3 <sup>rd</sup> -5 <sup>th</sup> Floor, Building A2, Zhihui Industrial Park, Baohu Economic Development Zone, Hefei, China Tel : +86 0551-66167968



Surestar International Inc.  
A: 28287 Beck Road, Unit D3, Wixom, MI 48393  
T: +1-248-773-7768